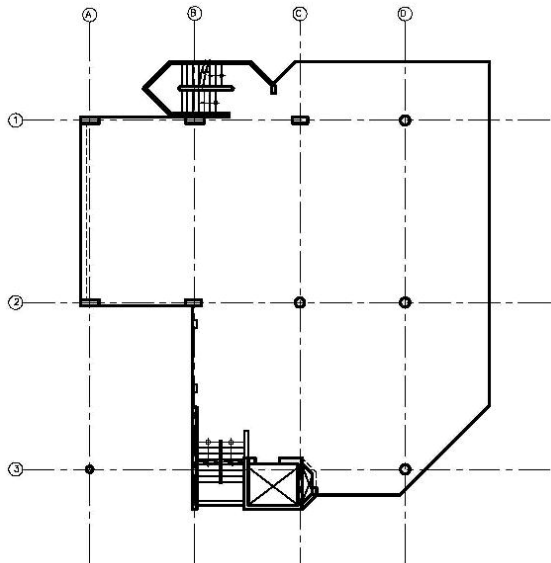




Representative Project



+1.305.285.7800
www.dhise.com



580 Crandon Blvd | Key Biscayne, Florida

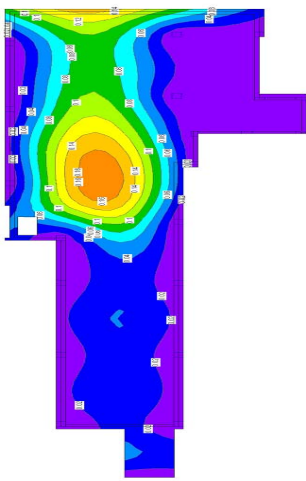
This 3-story medical office building houses a full featured surgical facility. Due to the large spans between columns and the staggering of the floors, the floors and the hip roof are 10" thick regularly reinforced slabs. The structural system consists of concrete shear walls, columns and shallow spread footings for the foundation.



Structural Engineers

+1.305.285.7800

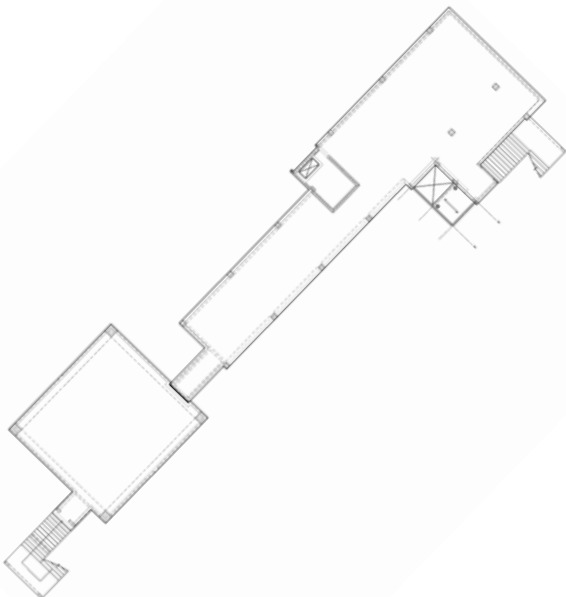
www.dhise.com



Representative Project

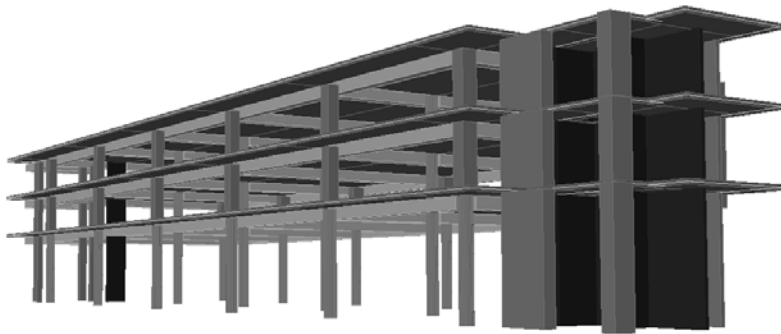
Coconut Willies @ Fontainebleau | Miami Beach, Florida

One story outdoor exhibition restaurant is within the Coastal Construction Control Line with a recreational rooftop. The construction system is post-tensioned concrete slabs and auger cast piles for the foundation system. The exterior envelope of the building is frangible concrete block walls.

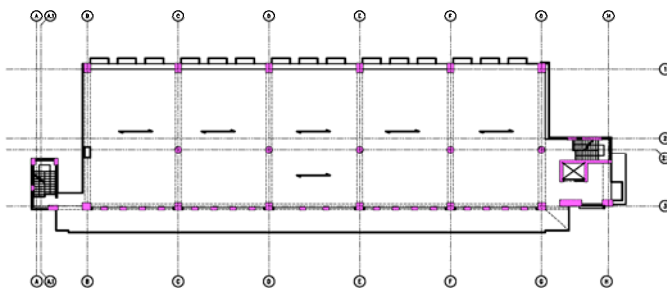




+1.305.285.7800
www.dhise.com



Representative Project



7750 Professional Building | Miami, Florida

3-story office building has large floor spans
Precast concrete joists and prestressed concrete soffit beams were the natural choice and match for this building frame.
The foundation system is shallow spread footings.